

The Riley County Historical Society and Museum

2309 Claflin Road Manhattan, Kansas 66502 Telephone: (785) 565-6490

RCHS NEWSLETTER

VOL. LVIII, NO. 4

AUGUST 2010

Bala Presbyterian Church Bell Dedication

At the Riley County Historical Museum

2309 Claflin Road, Manhattan, Kansas

August 29, 2010—3:00 P.M.

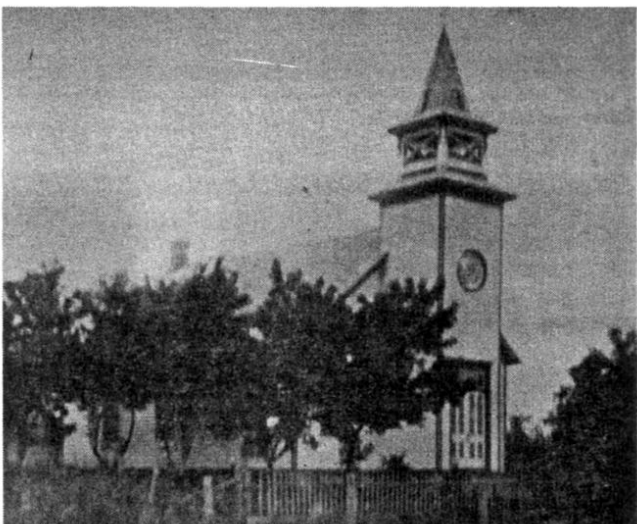
The bell from the Bala Presbyterian Church will be rededicated at the Riley County Museum meeting room Sunday, Aug 29, at 3:00 in the afternoon. The bell was first dedicated in 1890 when the Penuel Presbyterian Church was built. In 1930 the original steeple was taken down and the fellowship wing added. In 1979 a stonework pedestal was made from worked stone from the Sharples house and the bell mounted near the church.

This summer the bell was installed as an exhibit on the grounds of the Museum. Special thanks goes to the Bala Pioneer Heritage Society, as well as to Rich and Bob Williams, Jeff Frey, Dane Huff, Phil Parry, Wes Llewelyn, Eric Schwartz, Richard Pride, and all the men who work with him, for making the arrangements and for moving the bell.

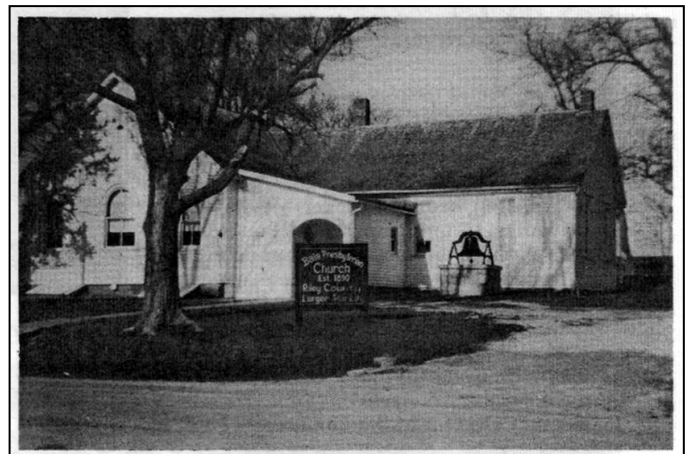
Program:

Welcome
History of the Church
Remembrances of the Church
Remarks
Closing Prayer

Phillip Parry
Kevin Larson
Pastor Margaret Luplow
Cheryl Collins, Museum Director
Pastor Erich Schwartz



Bala Presbyterian Church in Bala City, built in 1890.



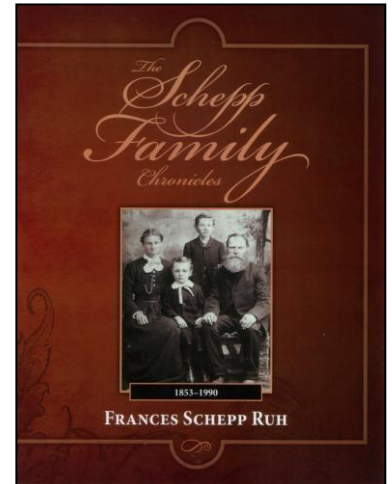
Bala Presbyterian Church in 1980

Books available at the Riley County Historical Museum

The Schepp Family Chronicles

By Frances Schepp Ruh

Fran Ruh was the speaker at the Riley County Historical Society dinner in July. The Schepp family settled in the Deep Creek area and over the next 150 years they experienced success, failure, desertion, divorce, alcoholism, wealth, poverty, secrets, kidnapping, even murder. Fran investigated her family with the objective eye of a historian, and the results are fascinating.



Images

By Maury Berggren

Maurice Berggren is well-known locally for the gorgeous stained glass windows he designed for Peace Lutheran Church and other churches, and for the many students he has taught over the years. He has worked in other media as well and this book is a collection of his best pieces. In full color with a hard cover, this is a quality book.

Also available: Publications of the Riley County Historical Society

This Land Is Our Land by Donald Parrish

Architects and Buildings of Manhattan, Kansas, by Pat O'Brien

Rural Schools of Riley County Kansas, by Charles & Doris Setterquist, Roger Brannan, and Doug Tippin

150 Years of Education: Manhattan Schools, by Doug Tippin

Town Team Baseball in Riley County During the 1930's, 1940's and 1950's,
by Charles & Doris Setterquist, Doug Tippin, and Roger Brannan

Isaac's Runaway Cow, by Jan McIntosh

Wolf House Thanks

Thanks to everyone for their response to the request for tablecloths for the dining table at the Wolf House. Rosalie Thompson gave one that fit, and Anna Gates gave one that can be an alternate.

Thanks to Arlene Elkins for her donation of six settings of Flow Blue dishes, a pattern that was used in the 1880's, for use on the dining table.

Thanks to Larry Glasgow and to Gary Clift, for sawing up fallen branches after the recent storm, and to Linda Glasgow, Corina Hugo and Ron and Dixie West for their help hauling the branches to the curb.

Sincerely, Edna Williams, Wolf House Museum Curator

Still Wanted:

Old sheets to use as dust covers.
Please bring to the museum,
2309 Claflin Road, Manhattan KS

Have you heard of *The Ballad of Baby Doe*? Did you know that the Tabors once lived in Riley County?

David Kanzeg will present *An Evening with the Tabors* September 13 at the Manhattan Public Library, 7:00 PM



Horace Tabor

Free-lance historian David Kanzeg will present *An Evening with the Tabors* on September 13th at the Manhattan Public Library. The program will trace the lives of former Riley County homesteaders Horace and Augusta Tabor (for whom Tabor Valley near Zeandale is named), and their magnificent rise to fame and fortune in late

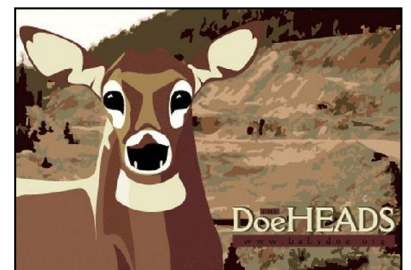


Augusta Tabor

19th-century Colorado. It will also highlight the brilliant history of “the second most performed American opera” (*The Ballad of Baby Doe*) that grew out of the true-life Tabor story. The program includes on-location photos and many audio and video excerpts never before seen or heard in Kansas.

David Kanzeg first encountered Baby Doe Tabor as a teenager in his parents' basement, when he was captivated by the Beverly Sills recording of *The Ballad of Baby Doe* on the radio. That chance occasion, and subsequent family vacations in Colorado, awakened an abiding interest in the Tabors. The decades since have taken him from coast to coast as well as to Europe in search of the details of the historical story and the creative background behind the opera. In addition to writing and speaking about Baby Doe, he and a fellow enthusiast set out to create "the definitive website" on the subject.

Since its debut in 1998, www.babydoe.org has welcomed correspondence and contributions from DoeHEADS on three continents. In his spare time, Dave is the Director of Programming for NPR and PBS radio and TV stations 90.3WCPN and WVIZ/PBS in Cleveland, Ohio.



*The Riley County
Historical Society and Museum
2309 Claflin Road
Manhattan, Kansas 66502*

Non-Profit Org.
U.S. Postage
PAID
Permit No. 407
Manhattan, KS 66502

Return Service Requested



Celebrate the 150th Anniversary of Kansas Statehood

The next meeting of all interested people is
Sept. 7, 4:00 p.m. at the
Riley County Historical Museum
Everyone is welcome to attend.